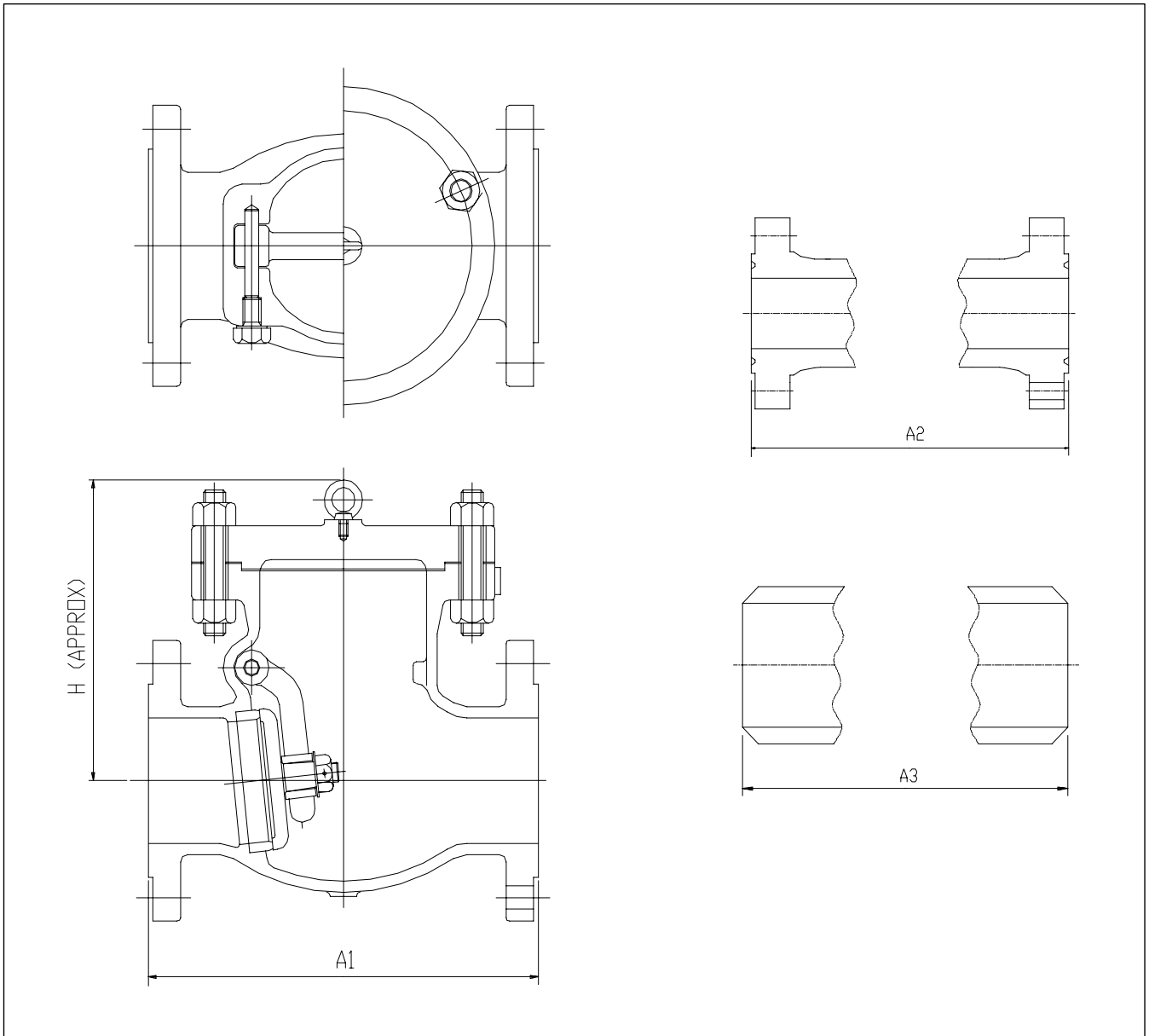


BOLTED COVER TYPE SWING CHECK VALVES



NO.	NAME OF PART	ASTM MATERIAL								
		STANDARD	HIGH TEMP. SERVICE			LOW TEMP. SERVICE	STAINLESS STEEL		ALLOY STEEL	
1	BODY	A216-WCB	A217-WC6	A217-WC9	A217-C5	A352-LCB	A351-CF8	A351-CF8M	A351-CN7M	A351-CK3MCUN
2	COVER	A216-WCB	A217-WC6	A217-WC9	A217-C5	A352-LCB	A351-CF8	A351-CF8M	A351-CN7M	A351-CK3MCUN
3	DISC	A217-CA15	A217-WC6	A217-WC9	A217-C5	A352-LCB	A351-CF8	A351-CF8M	A351-CN7M	A351-CK3MCUN
4	BODY SEAT RING	A105 + H.F	A182-F11	A182-F22	A182-F5a	A182-F304	A182-F304	A182-F316	A351-CN7M	A182-F51
5	HINGE PIN	A276-410				A276-304	A276-304	A276-316	ALLOY 20	A182-F51
6	ARM	A216-WCB	A217-WC6	A217-WC9	A217-C5	A352-LCB	A351-CF8	A351-CF8M	A351-CN7M	A351-CK3MCUN
7	BONNET BOLT	A193 - B7	A193 - B16	A193 - B16	A193 - B16	A320 - L7	A193 - B8	A193 - B8	A193 - B8	A193 - B8
8	BONNET NUT	A194 - 2H	A194 - 4	A194 - 4	A194 - 4	A194 - 4	A194 - 8	A194 - 8	A194 - 8	A194 - 8

MAIN DIMENSIONS & WEIGHT (CLASS 150)

VALVE SIZE	in	2	2.5	3	4	6	8	10	12	14	16	18	20	24	28	30	
	mm	50	65	80	100	150	200	250	300	350	400	450	500	600	700	750	
A1 & A3	in	8.0	8.5	9.5	11.5	16.0	19.5	24.5	27.5	31.0	36.0	38.5	38.5	51.0	57.0	60.0	
	mm	203	216	241	292	406	495	622	698	787	914	978	978	1295	1448	1524	
A3	in	8.5	9.0	10.0	12.0	16.5	20.0	25.0	28.0	31.5	36.5	38.5	39.0	51.5			
	mm	216	229	254	305	419	508	635	711	800	927	991	991	1308			
H	in	5.6	6.5	7.0	8.4	9.8	12.9	15.5	17.8	18.4	22.3	25.1	27.5	36.6	39.6	44.7	
	mm	142	165	178	213	249	328	394	452	467	566	638	699	930	1006	1135	
WEIGHT	RF	lb	35	51	64	93	170	276	487	719	893	1297	1625	2042	3579	4476	6297
		kg	16	23	29	42	77	125	221	326	405	588	737	926	1623	2030	2856
	BW	lb	26	35	46	68	148	240	423	606	732	1094	1387	1746	3188	4042	5786
		kg	12	16	21	31	67	109	192	275	332	496	629	792	1446	1833	2624

MAIN DIMENSIONS & WEIGHT (CLASS 300)

VALVE SIZE	in	2	2.5	3	4	6	8	10	12	14	16	18	20	24	28	30	
	mm	50	65	80	100	150	200	250	300	350	400	450	500	600	700	750	
A1 & A3	in	10.5	11.5	12.5	14.0	17.5	22.0	24.5	28.0	33.0	34.0	38.5	40.0	53.0	59.0	62.75	
	mm	267	292	318	356	444	559	622	711	838	864	978	1016	1346	1499	1594	
A2	in	11.12	12.12	13.12	14.62	18.12	22.62	25.12	28.62	33.60	34.60	39.12	40.75	53.88	60.00	63.75	
	mm	283	308	333	371	460	575	638	727	854	879	994	1035	1368	1524	1619	
H	in	6.9	7.6	8.4	9.1	12.3	13.9	18.2	20.5	22.6	25.9	29.6	31.2	38.3	44.9	48.4	
	mm	175	193	213	231	312	353	462	521	574	658	752	792	973	1140	1229	
WEIGHT	RF	lb	49	77	90	146	278	470	653	1021	1475	1863	2615	3215	4694	6125	7135
		kg	22	35	41	66	126	213	296	463	669	845	1186	1458	2129	2778	3236
	BW	lb	44	71	75	110	223	401	503	873	1219	1528	2134	2628	4240	7678	6117
		kg	20	32	34	50	101	182	228	396	553	693	968	1192	1923	3482	2774

MAIN DIMENSIONS & WEIGHT (CLASS 600)

VALVE SIZE	in	2	2.5	3	4	6	8	10	12	14	16	18	20	24	28	30	
	mm	50	65	80	100	150	200	250	300	350	400	450	500	600	700	750	
A1 & A3	in	11.5	13.0	14.0	17.0	22.0	26.0	31.0	33.0	35.0	39.0	43.0	47.0	55.0	61.0	65.0	
	mm	292	330	356	432	556	660	787	838	889	991	1092	1194	1397	1549	1651	
A2	in	11.62	13.12	14.12	17.12	22.12	26.12	31.12	33.12	35.12	39.12	43.12	47.25	55.38	61.50	65.50	
	mm	295	333	359	435	562	664	791	841	892	994	1094	1200	1406	1562	1663	
H	in	7.7	8.4	9.5	11.7	15.5	17.2	21.3	23.5	26.3	31.5	35.9	38.8	45.7	52.1	55.8	
	mm	196	213	241	297	394	437	541	597	668	800	912	986	1161	1323	1417	
WEIGHT	RF	lb	79	115	143	240	503	880	1334	1779	2328	3292	4401	5572	7047	8816	10721
		kg	36	52	65	109	228	399	605	807	1056	1493	1996	2527	3196	3998	4862
	BW	lb	64	93	117	179	417	759	1076	1574	1843	2679	3583	4703	5371	7486	9111
		kg	29	42	53	81	189	344	488	714	836	1215	1625	2133	2436	3395	4132

MAIN DIMENSIONS & WEIGHT (CLASS 900)

VALVE SIZE	in	2	2.5	3	4	6	8	10	12	14	16	18	20	24	
	mm	50	65	80	100	150	200	250	300	350	400	450	500	600	
A1 & A3	in	14.5	16.5	15.0	18.0	24.0	29.0	33.0	38.0	40.5	44.5	48.0	52.0	61.0	
	mm	368	419	381	457	610	737	838	965	1029	1130	1219	1321	1549	
A2	in	14.62	16.62	15.12	18.12	24.12	29.12	33.12	38.12	40.88	44.88	48.5	52.5	61.75	
	mm	371	422	384	460	612	740	841	968	1038	1140	1232	1333	1568	
H	in	12.3	12.9	13.2	15.6	17.4	20.6	26.1	28.6	30.9	32.6	35.5	39.8	45.6	
	mm	312	328	335	396	442	523	663	726	785	828	902	1011	1158	
WEIGHT	RF	lb	157	205	238	454	814	1363	2410	2952	3647	5067	6428	8304	12271
		kg	71	93	108	206	369	618	1093	1339	1654	2298	2915	3766	5565
	BW	lb	112	179	185	357	628	1072	1949	2564	3111	4399	5321	6972	9537
		kg	51	81	84	162	285	486	884	1163	1411	1995	2413	3162	4325

MAIN DIMENSIONS & WEIGHT (CLASS 1500)

VALVE SIZE	in	2	2.5	3	4	6	8	10	12	14	16	18	20	24	
	mm	50	65	80	100	150	200	250	300	350	400	450	500	600	
A1 & A3	in	14.5	16.5	18.5	21.5	27.75	32.75	39.0	44.5	49.5	54.5	60.5	66.5	76.5	
	mm	368	419	470	546	705	832	991	1130	1257	1384	1536	1664	1943	
A2	in	14.62	16.62	18.62	21.62	28.0	33.13	39.38	45.12	50.25	55.38	61.38	66.38	77.62	
	mm	371	422	473	549	711	841	1000	1146	1276	1406	1559	1686	1972	
H	in	12.3	12.9	13.7	15.8	21.9	24.5	28.6	36.4	38.2	40.6	45.1	48.9	55.3	
	mm	312	328	348	401	556	622	726	925	970	1031	1146	1242	1405	
WEIGHT	RF	lb	157	205	359	659	1250	2353	4002	6604	7208	10187	14002	17552	24806
		kg	71	93	163	299	567	1067	1815	2995	3269	4620	6350	7960	11250
	BW	lb	112	179	289	536	966	1945	3257	5442	5876	7828	11356	14377	19801
		kg	51	81	131	243	438	882	1477	2468	2665	3550	5150	6520	8980

MAIN DIMENSIONS & WEIGHT (CLASS 2500)

VALVE SIZE	in	2	2.5	3	4	6	8	10	12	
	mm	50	65	80	100	150	200	250	300	
A1 & A3	in	17.75	20.0	22.75	26.5	36.0	40.25	50.0	56.0	
	mm	451	508	578	673	914	1022	1270	1422	
A2	in	17.87	20.25	23.00	26.88	36.50	40.87	50.88	56.88	
	mm	454	514	584	683	927	1038	1292	1445	
H	in	16.1	16.3	17.2	18.7	20.2	27.5	32.8	39.1	
	mm	409	414	437	475	513	699	833	993	
WEIGHT	RF	lb	326	518	756	1411	3131	5380	8445	12502
		kg	148	235	343	640	1420	2440	3830	5670
	BW	lb	260	419	606	1186	2635	4741	6891	10099
		kg	118	190	275	538	1195	2150	3125	4580